



RACCORDI SERIE INOX

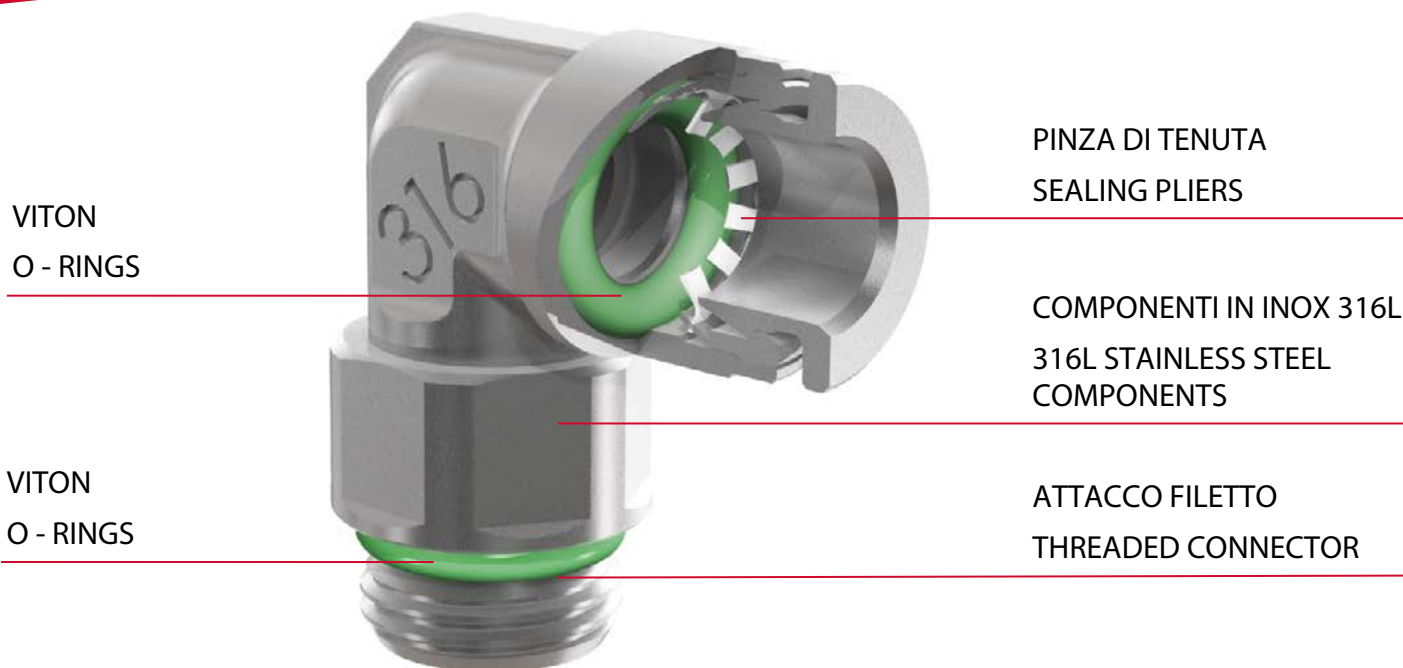
STAINLESS STEEL FITTINGS



Since 1978



the partner for your fittings



VITON
O - RINGS

PINZA DI TENUTA
SEALING PLIERS

COMPONENTI IN INOX 316L
316L STAINLESS STEEL
COMPONENTS

VITON
O - RINGS

ATTACCO FILETTO
THREADED CONNECTOR

CARATTERISTICHE TECNICHE PRINCIPALI

MATERIALI DI COSTRUZIONE:
COMPONENTI IN INOX - GUARNIZIONI O-RING
IN VITON - PINZA AISI301

PRESSIONE MAX D'ESERCIZIO:
18 BAR (1,8 MPa)

TEMPERATURA DI LAVORO:
-20°C (253K), +150°C (423K)

TUBI UTILIZZABILI:
RILSAN PA11, RILSAN PA12, NYLON PA6,
PVDF, FEP, POLIETILENE, PTFE,
POLIURETANO

MAIN TECHNICAL FEATURES

CONSTRUCTION MATERIALS:
MAIN BODIES IN STAINLESS STEEL - O-RING
VITON - AISI301 PLIERS

MAX WORKING PRESSURE:
18 BAR (1,8 MPa)

WORKING TEMPERATURE:
-20°C (253K), +150°C (423K)

SUITABLE FOR TUBES:
RILSAN PA11, RILSAN PA12, NYLON PA6,
PVDF, FEP, PTFE, POLYETILENE,
POLYURETHANE

COMPATTO E RESISTENTE

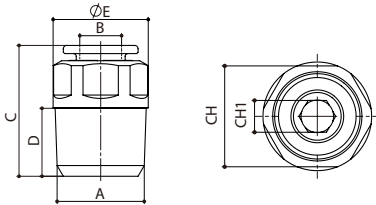
La famiglia di raccordi in acciaio inox AISI 316L è progettata per funzionare in ambienti particolarmente aggressivi e veicolare fluidi corrosivi. È caratterizzata da estrema compattezza dimensionale, semplicità di utilizzo e alta resistenza.

COMPACT AND RESISTANT

The Stainless Steel Line made in AISI 316L is designed for high aggressive environment and to drive corrosive fluids. It is very compact, simple to use and resistant.

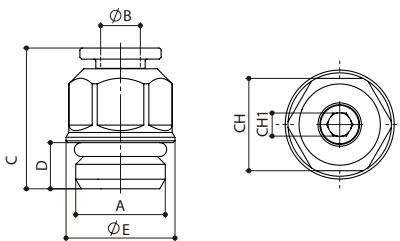


X10 FISSO DIRITTO CONICO X10 FIXED TAPERED STRAIGHT



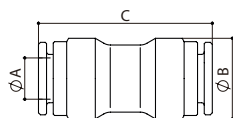
CODE	A	B	C	D	E	CH	CH1
X108040	R1/8	4	15.5	8	11	10	3
X104040	R1/4	4	20	10	14	13	3
X108060	R1/8	6	18.5	8	12	11	4
X104060	R1/4	6	19	10	14	13	4
X108080	R1/8	8	22.5	8	14	13	6
X104080	R1/4	8	20	10	14	13	6
X104100	R1/4	10	26.5	10	16	15	8
X103100	R3/8	10	24	11	17.5	15	8
X103120	R3/8	12	27	11	21	18	10
X102120	R1/2	12	29	14	21.5	20	10

X10 FISSO DIRITTO CILINDRICO+OR X10 FIXED CYLINDRICAL STRAIGHT + OR



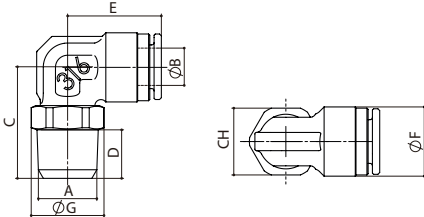
CODE	A	B	C	D	E	CH	CH1
X105048	M5	4	17.5	4	10	9	2.5
X108047	G1/8	4	15	5	12	11	3
X105068	M5	6	18.5	4	12	11	2.5
X108067	G1/8	6	17.5	5	12	11	4
X104067	G1/4	6	16	6	14.5	13	4
X108087	G1/8	8	20	5	14	13	5
X104087	G1/4	8	18	6	14.5	13	6
X104107	G1/4	10	23	6	16	15	8
X103107	G3/8	10	23	8	18.5	17	8
X103127	G3/8	12	28	8	19.5	18	10
X102127	G1/2	12	24.5	9	22	20	10

X50 INTERMEDIO DIRITTO X50 INTERMEDIATE STRAIGHT



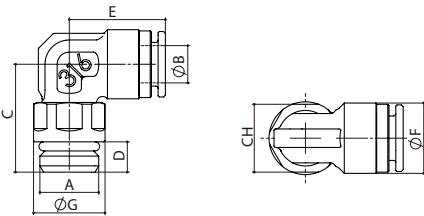
CODE	A	B	C
X500040	4	10	24
X500060	6	12.5	25
X500080	8	14.5	28
X500100	10	15	31
X500120	12	18.5	37

X20 GIREVOLE - L CONICO X20 SWIVEL TAPERED ELBOW



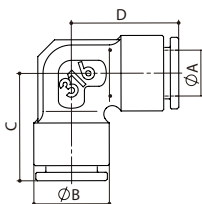
CODE	A	B	C	D	E	F	G	CH
X208040	R1/8	4	17.5	8	14	9.5	11	10
X208060	R1/8	6	18.5	8	15.5	11.5	12	10
X204060	R1/4	6	21.5	10	15.5	11.5	15.5	14
X208080	R1/8	8	20	8	18	13.5	13	12
X204080	R1/4	8	22.5	10	18	13.5	15.5	14
X204100	R1/4	10	24	10	20.5	15	15	14
X203100	R3/8	10	25.5	11	20	15	18.5	17
X203120	R3/8	12	27.5	11	24.5	18.5	18.5	17
X202120	R1/2	12	32	14	24.5	18.5	24	22

X20 GIREVOLE - L CILINDRICO + OR X20 SWIVEL CYLINDRICAL + OR ELBOW



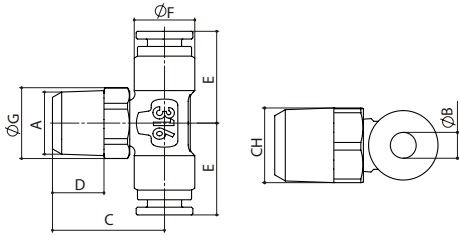
CODE	A	B	C	D	E	F	G	CH
X205048	M5	4	15	4	14	9.5	9	8
X208047	G1/8	4	17	5	14	9.5	12	11
X205068	M5	6	16	4	15.5	11.5	11	10
X208067	G1/8	6	18	5	15.5	11.5	12	11
X204067	G1/4	6	20	6	15.5	11.5	14.5	13
X208087	G1/8	8	18.5	5	18	13.5	13	12
X204087	G1/4	8	21	6	18	13.5	14.5	13
X204107	G1/4	10	21	6	20	15	15.5	14
X203107	G3/8	10	24	8	20	15	18.5	17
X203127	G3/8	12	26	8	24.5	18.5	18.5	17
X202127	G1/2	12	30	9	24.5	18.5	24.5	20

X60 INTERMEDIO - L X60 INTERMEDIATE ELBOW



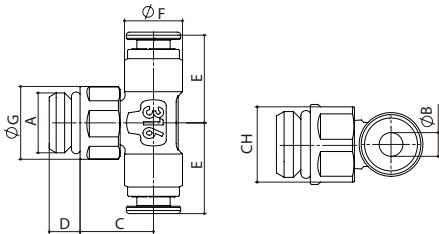
CODE	A	B	C	D
X600040	4	9.5	15.5	15.5
X600060	6	11.5	16.5	16.5
X600080	8	13.5	19	19
X600100	10	15	20.5	20.5
X600120	12	18.5	25	25

X40 GIREVOLE - T CENTRALE CONICO X40 SWIVEL TAPERED BRANCH TEE



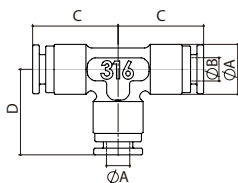
CODE	A	B	C	D	E	F	G	CH
X408040	R1/8	4	17.5	8	14	9.5	11	10
X408060	R1/8	6	18.5	8	15.5	11.5	12	11
X404060	R1/4	6	21.5	10	15.5	11.5	15.5	14
X408080	R1/8	8	20	8	18	13.5	13	12
X404080	R1/4	8	22.5	10	18	13.5	15.5	14
X404100	R1/4	10	24	10	20.5	15	15	14
X403100	R3/8	10	25.5	11	20	15	18.5	17

X40 GIREVOLE - T CENTRALE CILINDRICO + OR X40 SWIVEL CYLINDRICAL + OR BRANCH TEE



CODE	A	B	C	D	E	F	G	CH
X405048	M5	4	14.5	4	14	9.5	9	8
X408047	G1/8	4	17	5	14	9.5	12	11
X405068	M5	6	16	4	15.5	11.5	11	10
X408067	G1/8	6	18	5	15.5	11.5	12	11
X404067	G1/4	6	20	6	15.5	11.5	14.5	13
X408087	G1/8	8	18.5	5	18	13.5	13	12
X404087	G1/4	8	21	6	18	13.5	14.5	13
X404107	G1/4	10	21	6	20	15	15.5	14
X403107	G3/8	10	24	8	20	15	18.5	17

X70 INTERMEDIO - T X70 INTERMEDIATE TEE



CODE	A	B	C	D
X700040	4	9.5	15.5	15.5
X700060	6	11.5	16.5	16.5
X700080	8	13.5	19	19
X700100	10	15	20.5	20.5
X700120	12	18.5	25	25



 **SISTEM
PNEUMATICA**

Via della salute, 85/10 bcd
40132 – Bologna – ITALY
Tel: +39 051 4144811 – Fax: +39 051 406158
www.sistemp.com – info@sistemp.com