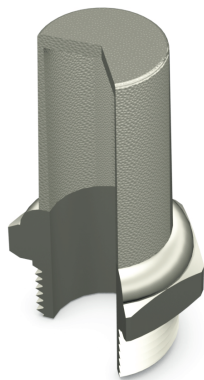




## SILENZIATORI SILENCER

**CARATTERISTICHE TECNICHE PRINCIPALI**  
**MAIN TECHNICAL FEATURES**

**HAUPTTECHNISCHE DATEN**  
**PRINCIPALES CARACTERISTIQUES TECHNIQUES**



MATERIALI DI COSTRUZIONE CONSTRUCTION MATERIALS		HERSTELLUNGSMATERIAL MATERIEL DE FABRICATION	
Ottone (EN 12164 - CW614n) - Filo acciaio inox - Resina acetato Nickel-plated brass (EN 12164 - CW614N) Stainless steel wire - Acetyl resin Messing (EN 12164 - CW614n) - Edeltahldraht - Acetalharz Laiton (EN 12164 - CW614n) - Fil acier inox - Resine acetal			
	-10°C (263 K) +80°C (353K)		12 BAR (1,2 MPa) <b>Code SPL: 6 BAR</b>

**CODIFICA SILENZIATORI**  
**SILENCER CODING**

**BESTELLNUMMERSYSTEM SCHALLD**  
**CODIFICATION SILENCIEUX**

Versioni Speciali - Special Version  
Schlüssel für Sonderanfertigung - Versions spéciales

Serie articolo - Series  
Serie - Séries

**SFE 05 0\_**

Filetto - Thread - Gewinde - Filet