

SERVOVALVOLE PNEUMATICHE UNIDIREZIONALI

BLOCKING VALVES 1-WAY IN-LINE

ESEMPI D'APPLICAZIONE - APPLICATION EXAMPLES

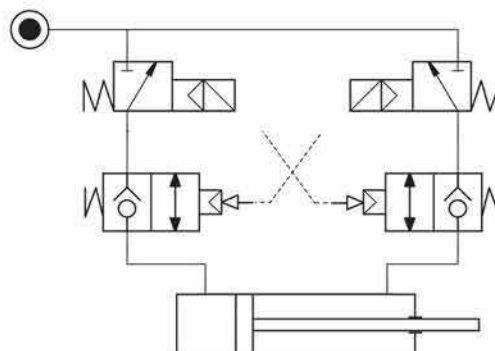
Tre posizioni centri chiusi - Three positions closed centers

NOTE TECNICHE

Comando cilindro pneumatico doppio effetto con valvola a 3 vie, realizzando la funzione centri chiusi, bloccaggi intermedi sulla corsa con i seguenti vantaggi:
 - uso di valvole ad otturatore
 - arresto immediato facilitato dalla installazione di valvole direttamente a bordo

TECNICAL NOTES

Double-acting pneumatic cylinder control via 3-way valve. Actuates closed-centers operation. Intermediate stops along travel offer the following advantages:
 - use of valves with shutter (very fast)
 - check valves fitted direct to cylinder facilitate immediate stop.



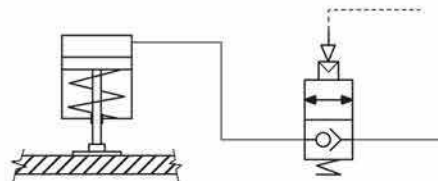
Morsa, pressore, bloccaggio - Chuck, presser, clamping

NOTE TECNICHE

Cali improvvisi di pressione, rottura accidentale di tubazioni o di componenti, non pregiudicano la funzionalità.

TECNICAL NOTES

Any sudden pressure drops, accidental hose breaking or component failure do not effect operation and safety



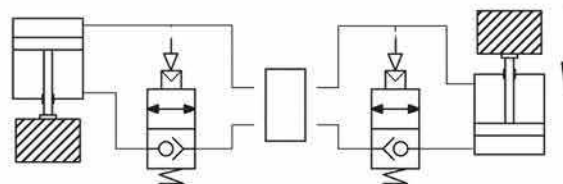
Sostentamento carichi (non di sicurezza) - Load support (not-safety)

NOTE TECNICHE

Il carico viene mantenuto in posizione contro cali improvvisi di pressione, rotture di tubazioni o di componenti.

TECNICAL NOTES

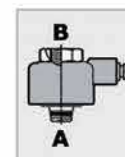
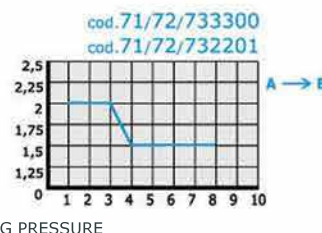
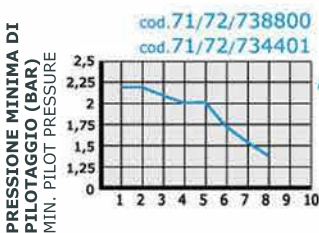
Load is kept in place even in the event of sudden pressure drops or accidental breaking of hoses or components.



DIAGRAMMI DI PORTATA - FLOW-CHART LOAD

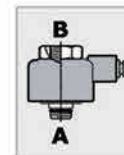
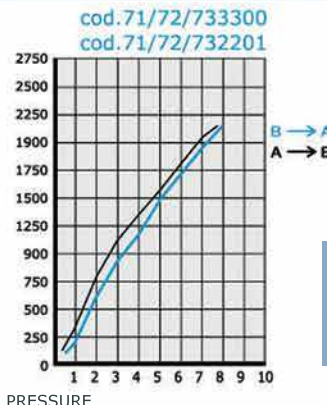
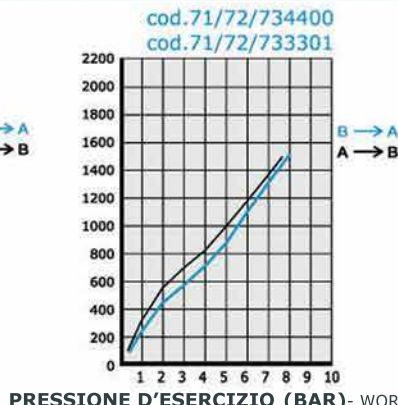
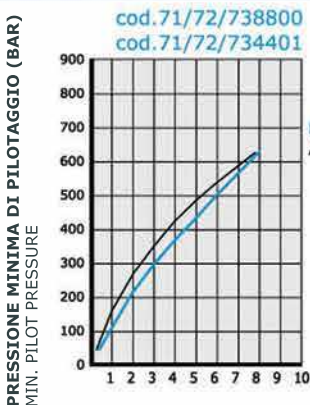
Pressione minima di pilotaggio in funzione della pressione d'esercizio

Min. pilot pressure according to working pressure



Portata massima in funzione della pressione d'esercizio

Max. capacity according to working pressure



Valori ottenuti con pressione atmosferica a valle della valvola
 Values refer to a capacity with atmospheric pressure downstream the valve